



Greenwood

Nottinghamshire's Community Forest bringing Sherwood Forest to your doorstep

TREES FOR CLIMATE

A Woodland Creation
Fund from England's
Community Forests



**Nottinghamshire
County Council**



GREENWOOD

England's Community Forests are at the heart of the Trees for Climate woodland creation programme funded by DEFRA. This national initiative can help you with:

- Grant funding to cover up to 100% of costs of woodland creation
- Funding for upto 15 years of ongoing maintenance to ensure success
- Design, planning and planting advice from a professional woodland team
- Flexible schemes to reflect landowner and site needs
- Support for fencing, gates, pathways, wildflower margins and more



WHAT ARE COMMUNITY FORESTS?

There are 15 community forests in England, positioned around large populations. Their purpose is to create green infrastructure projects that deliver social, economic, and environmental benefits for millions of people.

The Greenwood Community Forest is the local delivery agent, working across the whole of Nottinghamshire. We provide advice, technical support, and funding for a range of woodland creation and tree planting projects including orchards, agroforestry, carbon, productive woodland, and woods.





WHAT IS TREES FOR CLIMATE?

DEFRA created this national initiative for natural solutions to climate change. The grants offered are flexible and tailored to the needs of individual schemes. Whether you are a school wanting to create a 'Forest School', a parish council wanting to add shade to a green space or a farmer diversifying income streams, we can help.

The grant aims to cover all costs associated with woodland creation, including support for maintenance of the trees for up to 15 years. In some situations, we can also fund the installation of woodland infrastructure and the creation of associated woodland habitats.

To find out how we can help call our team on **0115 993 2600** or email **greenwood@nottssc.gov.uk**



WHAT CAN TREES DO FOR YOU AND YOUR LAND?

- Increase biodiversity - crops benefit as well as the environment
- Reduce flooding - direct interception of rainfall, by promoting higher soil infiltration rates, through greater water use, increased frictional resistance when passing over land - all slowing water runoff
- Prevent soil erosion - intricate root systems hold soil in place, water filtering through the roots helps prevent runoff of pollutants and silt entering the water course.
- Trees help reduce wind erosion
- Provide shelter for livestock
- Support life on earth as they capture carbon and release oxygen
- Reduce atmospheric pollution by absorbing harmful pollutants like nitrogen oxide, ammonia and sulphur dioxide
- Trees are known to improve mental health and wellbeing





WHAT ARE THE BENEFITS FOR YOUR BUSINESS?

- Absorb carbon which can be sold as carbon credits or offset your own carbon emissions
- Biodiversity Net Gain
- Recreation - game shoots, glamping, outdoor adventurous activities to forest schools. Project dependant additional funding sources are available
- Long term commitment with long term financial benefits
- You can be paid to maintain the trees planted on your land
- Trees provide timber - wood fuel, wood for construction and furniture, coppice materials, wood chippings, fencing
- Trees are subject to a range of tax benefits

We would always recommend that you seek independent advice.



WOODLAND EXAMPLES WE CAN SUPPORT



Multi-use woodland (>5 ha)

Minimum of 1,600 trees per ha
No single species more than 70%
Up to 20% woody shrubs



Low density tree planting

Minimum of 25 trees per ha
Minimum final canopy cover of 20%
across area planted
Species appropriate to context



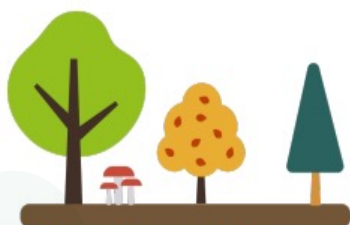
Small scale tree planting (0.5-4.99 ha)

Minimum of 1,100 trees per ha
Up to 20% woody shrubs



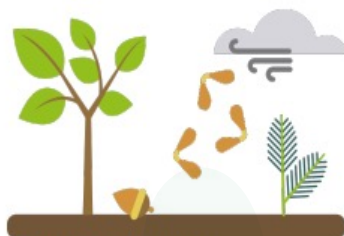
Hedgerows with/without trees

5 plants per linear metre
Trees planted every 15 metres as appropriate
70% native or locally characteristic



Very small scale tree planting (0.1-0.49 ha)

Minimum of 1,100 trees per ha
Up to 20% woody shrubs
Fruit trees accepted



Natural colonisation

Must achieve minimum of 60% woody cover
and 100 trees per ha within ten years



THE PROCESS

Pre-planting



Approved woodland design

After completing steps to plan, design, budget and get statutory consent, the scheme will be approved by your Local Community Forest.



Grant offer

The grant offer will be subject to estimated costs within the project budget. Amendments can still be made at this point.



Landowner agreement

After acceptance of the grant offer the applicant will be asked to enter into a landowner agreement. The agreement lasts up to 15 years.

Planting



Plant to specifications

Plant the trees according to the design and specifications agreed with your Local Community Forest.



Site inspection

After planting the site will be inspected by a member of your Local Community Forest.



Post-planting



Submit grant claim form

Following inspection submit a claim form along with evidence.

Evidence can be in the form of photos and invoices.



Ongoing maintenance

If there is a maintenance plan, carry out as agreed. Record these operations with pictures and invoices too.



Further grant claims

If the grant has multiple payments then claim forms need submitting at the agreed times, along with evidence.



Trees for Climate launched in 2020, to date the Greenwood team has:

- completed **50** projects
- planted over **150** hectares of native broadleaf trees
- capturing an estimated **642** tonnes of carbon per year
- increased water storage capacity by a potential **14756m³** per year
- given an additional **15,000+** homes access to nature within 500 metres of their doorstep

PROJECTS WE'VE WORKED ON

Hedge planting

900 metres of new hedge was planted on a farm near Nottingham, and 59 hedgerow trees added, creating new linkages between a internal farm hedge network and to adjacent woodland.

The use of Biomat helps control weed competition without the need for herbicides.



Community planting at Calverton

almost a hundred residents joined a weekend tree-planting session in addition to local schools planting 185 native trees.

An initial site survey looked at what existing wildlife lived in the area and several design options were considered. Following consultation with local people and the parish council, a community woodland of 1.5 ha was agreed with future plans to improve access and use the area for 'quiet' outdoor activities.





Farm planting

Man-made and geographical features can create difficult areas to farm. Our professional team can advise on how strategic planting in difficult to farm locations could maximise functionality. Designing a scheme that assists farming practices while increasing biodiversity, providing habitats for pollinators and bringing benefits to nature and farming.

School planting - Hawthorne Primary

Following a blazing summer and a particularly scorching sports day, staff and children became acutely aware of the lack of shade on their playing field. 12 standard trees have been planted and although it will take a few years, future generations of pupils and staff will have some shady spots to eat lunch and cheer on the footie teams. Inspired by the benefits of trees, additional planting took place to increase the size of their 'future' forest school area.



For more information contact the Greenwood team:
greenwood@nottsc.gov.uk

 **Greenwood**
Nottinghamshire's Community Forest bringing Sherwood Forest to your doorstep

 **Nottinghamshire
County Council**

W nottinghamshire.gov.uk
E greenwood@nottsc.gov.uk
T 0115 977 1234

 facebook.com/nottinghamshire

 [@NottsCC](https://twitter.com/NottsCC)